



CABLE WHARF

by

lovelivinghomes

Elba Heights

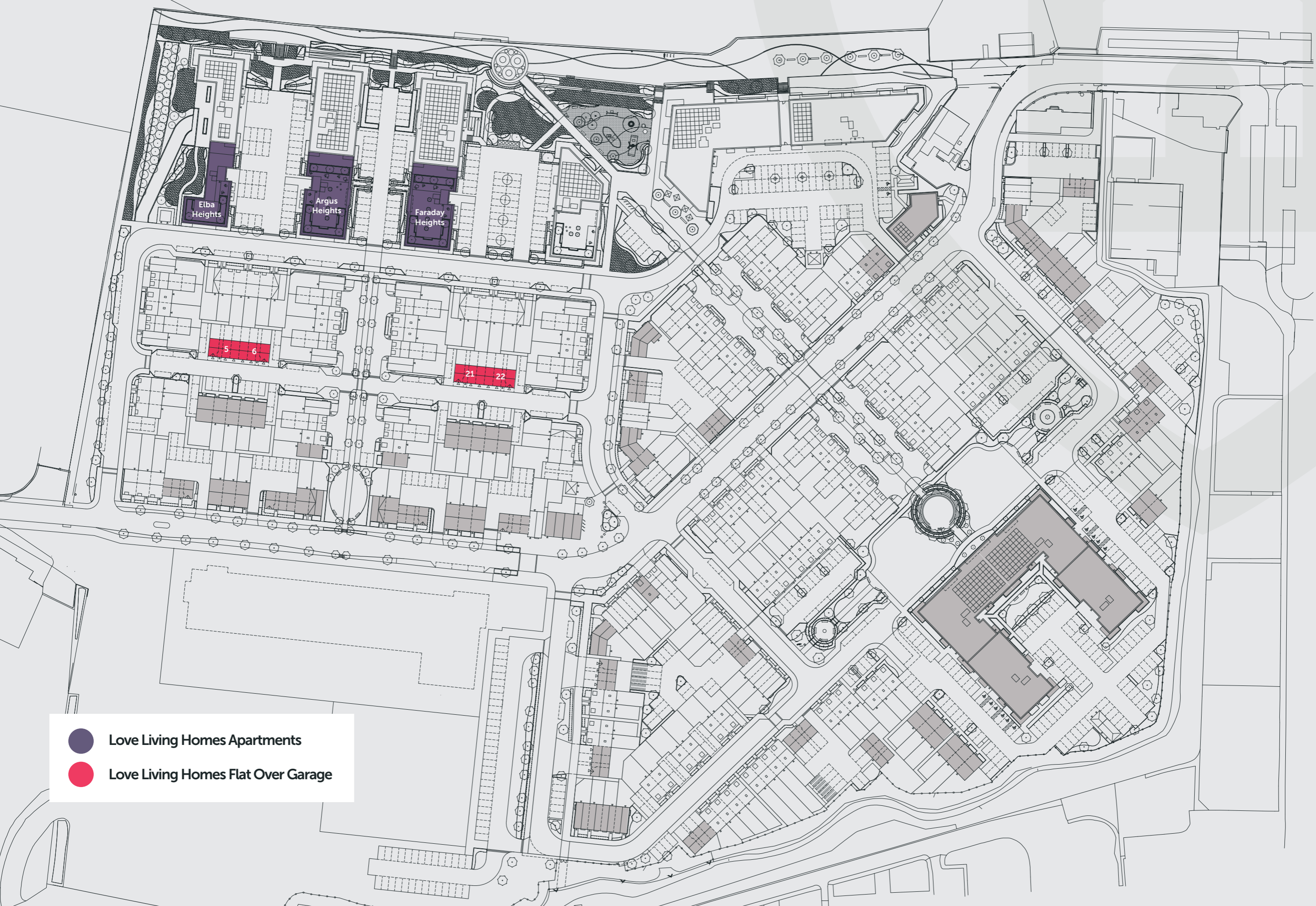
Cable Wharf





Artistic impression. Elevation treatments are subject to change.

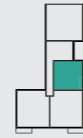
**A highly sought-after key commuter location.
Enjoy fast access into London St Pancras in 23 minutes.**

Cable Wharf site plan



-  Love Living Homes Apartments
-  Love Living Homes Flat Over Garage

Tulip



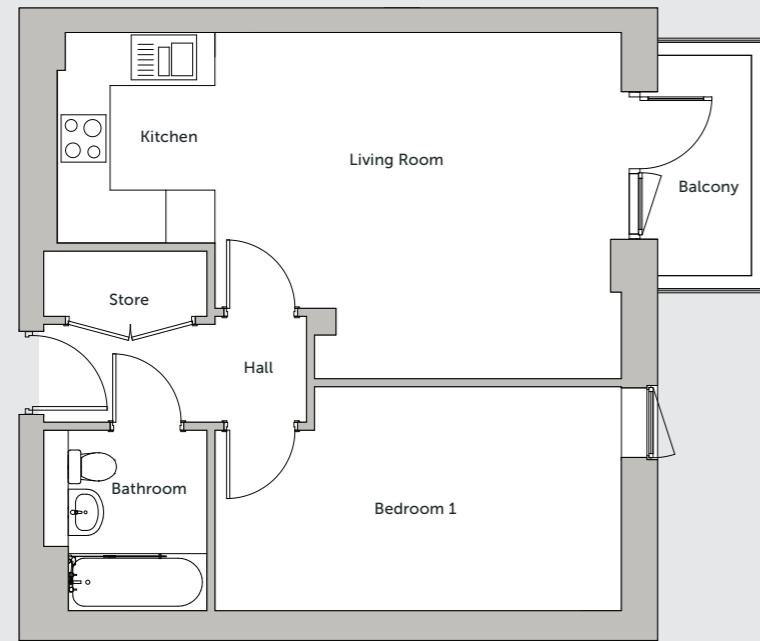
50.0 sqm / 538 sqft



1 Bedroom



1 Bathroom



DIMENSIONS

KITCHEN

2581mm x 1934mm - 8'5" x 6'4"

LIVING ROOM

4978mm x 4242mm - 16'4" x 13'11"

BATHROOM

2212mm x 2000mm - 7'3" x 6'6"

BEDROOM 1

4978mm x 2745mm - 16'4" x 9'0"

PLOTS

FLOOR PLOT

1F 241

2F 245

3F 249

Chestnut



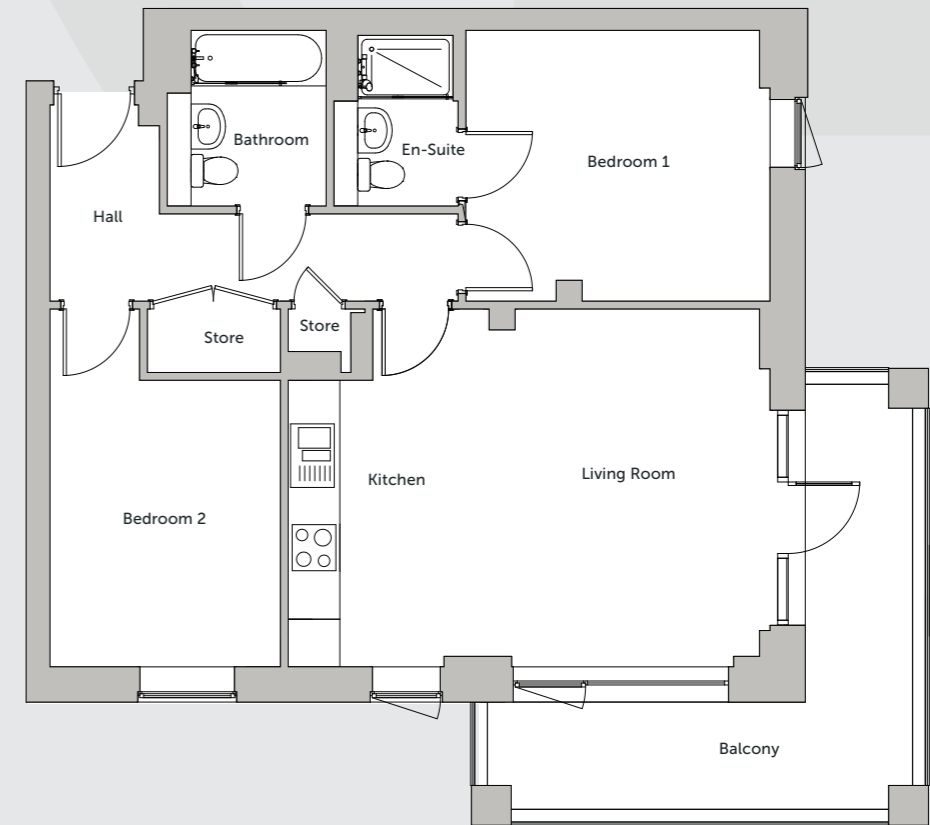
71.1 sqm / 765 sqft



2 Bedrooms



2 Bathroom



DIMENSIONS

KITCHEN

3608mm x 1063mm - 11'10" x 3'6"

LIVING ROOM

4867mm x 4373mm - 15'11" x 14'4"

BATHROOM

2213mm x 2000mm - 7'3" x 6'6"

BEDROOM 1

3695mm x 3410mm - 12'1" x 11'2"

BEDROOM 2

4505mm x 2900mm - 14'9" x 9'6"

PLOTS

FLOOR PLOTS

GF 238 + 239

1F 242 + 243

2F 246 + 247

3F 250 + 251



Lime



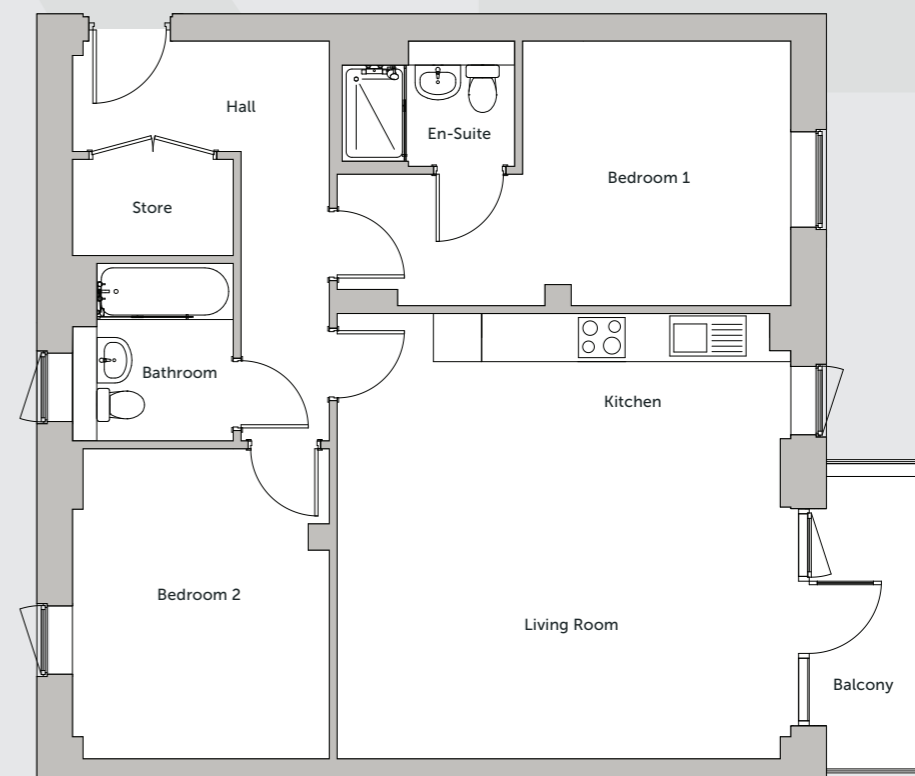
79.9 sqm / 860 sqft



2 Bedrooms



2 Bathroom



DIMENSIONS

KITCHEN

5658mm x 1560mm - 18'6" x 5'1"

LIVING ROOM

5658mm x 3989mm - 18'6" x 13'1"

BATHROOM

2213mm x 2000mm - 7'3" x 6'6"

BEDROOM 1

5652mm x 3300mm - 18'6" x 10'10"

BEDROOM 2

3865mm x 3200mm - 12'8" x 10'6"

PLOTS

FLOOR	PLOT
GF	240
1F	244
2F	248
3F	252

Specification

All our homes at Cable Wharf include generous specifications to make life as comfortable and convenient as can be.

KITCHEN

- Contemporary Symphony grey kitchen units with Pearl Granite worktops
- Integrated fridge/freezer and dishwasher
- Integrated electric oven and hob
- Stainless steel splash back & canopy extractor fan
- Stainless steel sink and drainer

BATHROOM

- Contemporary white bathroom suite with chrome fittings
- White gloss tiles
- Stone effect light grey vinyl flooring
- Shower over bath with glass screen
- Pedestal washbasin with mixer tap
- Chrome heated towel radiator

INTERIOR & DECORATION

- Textured, light wood effect vinyl floorings to kitchen & hallways
- White emulsion to walls and ceilings and white satin to woodwork
- Durable neutral carpets to all bedrooms and living area
- High efficiency combi boiler
- Automatic room thermostat control
- TV / broadband connection points
- Built in storage solutions

EXTERIOR

- Allocated parking
- Riverfront development

WARRANTY

- All Love Living Homes are backed by a full 10-year NHBC warranty to provide peace of mind, and help you relax knowing that there's help if you need it!



Reserving your chosen plot

There's nothing more exciting than taking that first step onto the home ownership ladder. With generous specifications, make life comfortable and convenient in the beautiful Gravesham area. Love your new home at Cable Wharf with Love Living Homes.

To reserve your plot or for more information on the development, please contact our local agents:

 buy@lovelivinghomes.co.uk
07340 361424

Monson House, Monson Way,
Tunbridge Wells, Kent TN1 1LQ
lovelivinghomes.co.uk

