

Meadow View

Crowborough

———— lovelivinghomes ————

by

lovelivinghomes

Meadow View



Meadow View is a new development of two and three bedroom homes located on the fringes of the Crowborough countryside.

Meadow View Site Plan



Meadow View
Walshes Road
Crowborough
TN6 3RE

This site plan depicts the intended layout and development mix at the time of creation and is for orientation purposes and may be subject to change. Parking, landscaping, finished locations and materials are all for guidance only.

Computer generated image

The Cherry (2 Bed House)

Plots 20, 21, 23 & 24



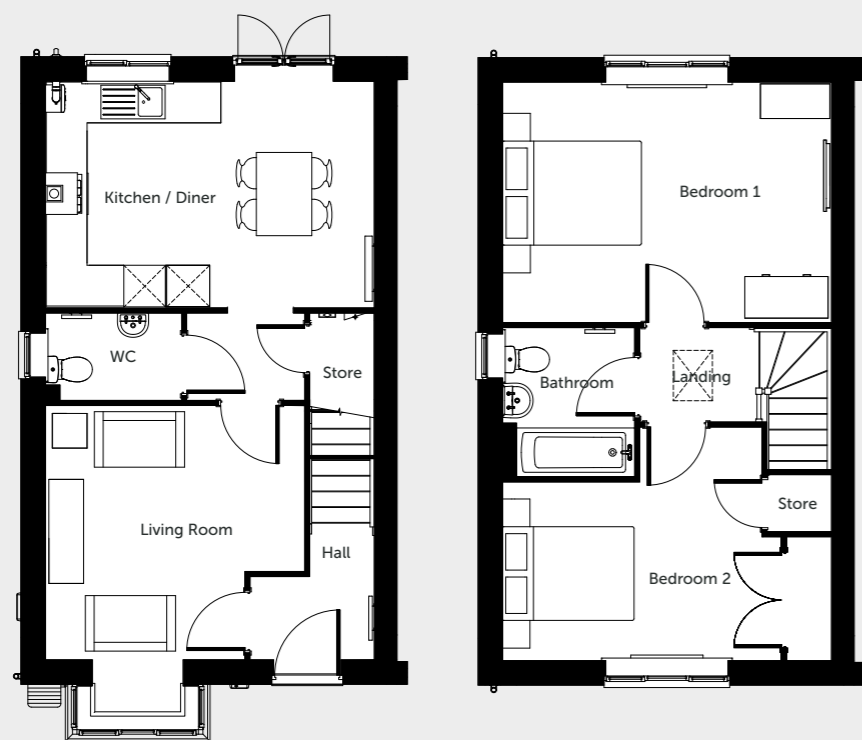
79 sqm / 850 sqft



2 Bedrooms



1 Bathroom



Ground Floor

First Floor

DIMENSIONS

KITCHEN / DINER

4740mm x 3268mm - 15'6" x 10'8"

LIVING ROOM

3736mm x 3704mm - 12'3" x 12'2"

BEDROOM 1

4740mm x 3503mm - 15'6" x 11'6"

BEDROOM 2

4053mm x 3368mm - 13'3" x 11'



Please note that all dimensions shown are for guidance only and maximum measurements are shown where necessary. Plans should not be used for furniture or other fittings. Furniture shown is for illustrative purposes only and not included. Individual units may vary according to location – please consult your sales advisor for more details.

Computer generated image

The Apple (3 Bed House)

Plots 18, 19, 52, 53 & 55



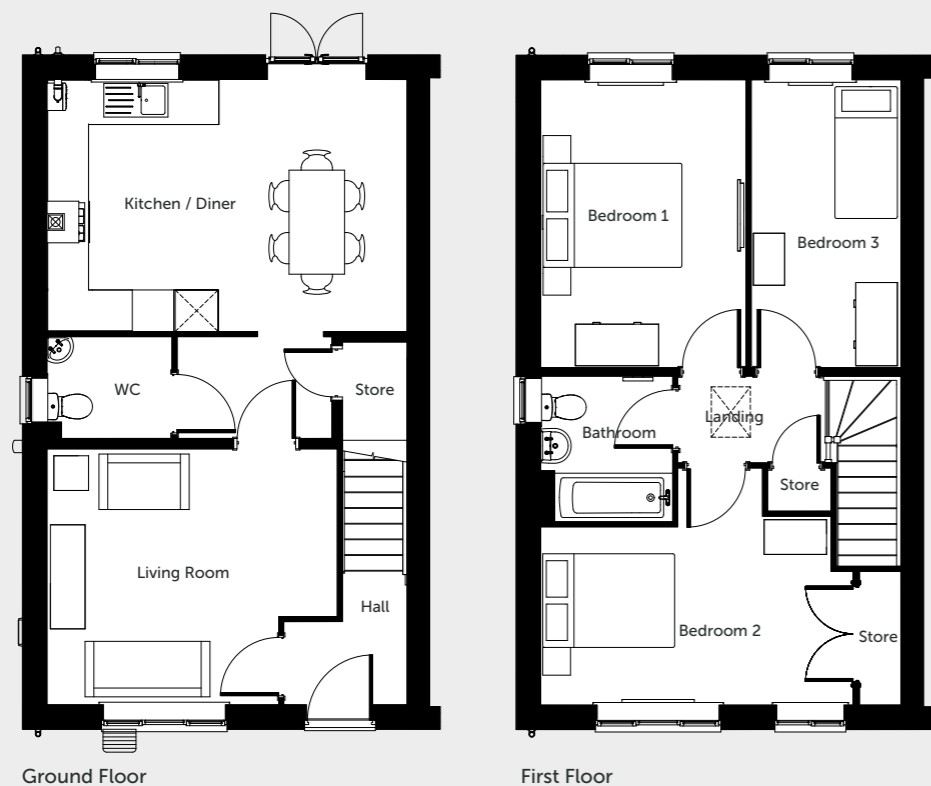
93.6 sqm / 1008 sqft



3 Bedrooms



1 Bathroom



Ground Floor

First Floor

DIMENSIONS

KITCHEN / DINER

5190mm x 3635mm - 17' x 11'11"

LIVING ROOM

4185mm x 3740mm - 13'9" x 12'3"

BEDROOM 1

4151mm x 2960mm - 13'7" x 9'8"

BEDROOM 2

5190mm x 3419mm - 17' x 11'2"

BEDROOM 3

4151mm x 2158mm - 13'7" x 7'1"

Please note that all dimensions shown are for guidance only and maximum measurements are shown where necessary. Plans should not be used for furniture or other fittings. Furniture shown is for illustrative purposes only and not included. Individual units may vary according to location – please consult your sales advisor for more details.

The Apple (3 Bed House with Bay Window)

Plots 16 & 17



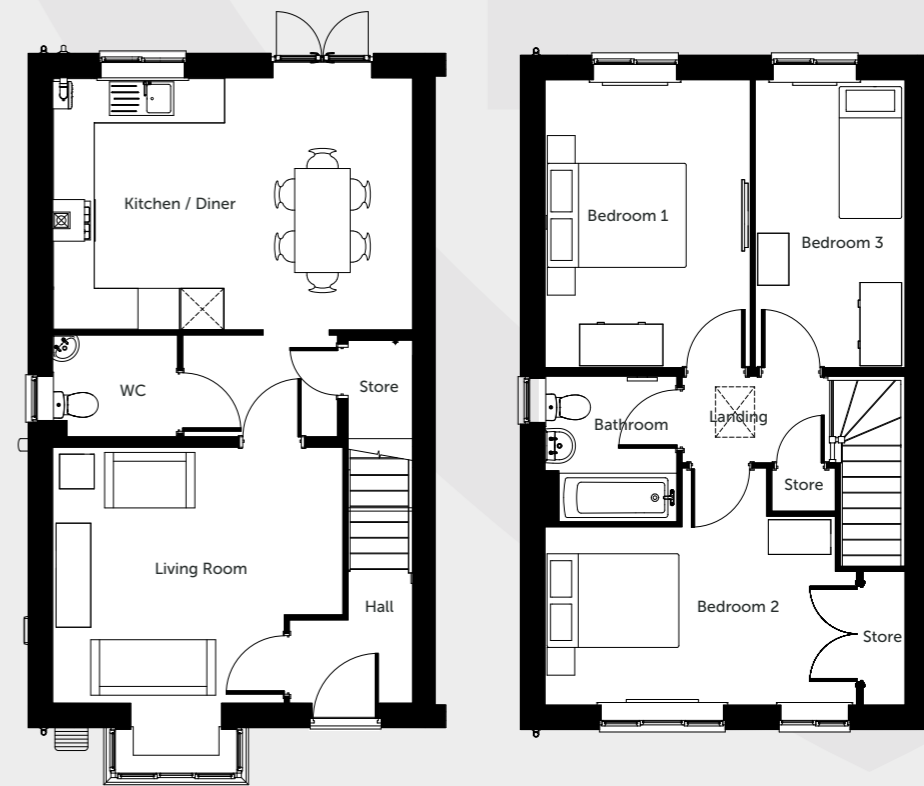
93.6 sqm / 1008 sqft



3 Bedrooms



1 Bathroom



Ground Floor

First Floor

DIMENSIONS

KITCHEN / DINER

5190mm x 3635mm - 17' x 11'11"

LIVING ROOM

4185mm x 3740mm - 13'9" x 12'3"

BEDROOM 1

4151mm x 2960mm - 13'7" x 9'8"

BEDROOM 2

5190mm x 3419mm - 17' x 11'2"

BEDROOM 3

4151mm x 2158mm - 13'7" x 7'1"

Please note that all dimensions shown are for guidance only and maximum measurements are shown where necessary. Plans should not be used for furniture or other fittings. Furniture shown is for illustrative purposes only and not included. Individual units may vary according to location – please consult your sales advisor for more details.

Specification

All our homes at Meadow View include generous specifications to make life as comfortable and convenient as can be.

KITCHEN

- Contemporary light blue kitchen units with dark grey laminate worktop
- Glass splash back
- Extractor fan
- 1.5 bowl sink and drainer
- Integrated fridge/freezer, electric fan oven, ceramic hob, washing machine and dishwasher
- Textured, light wood effect vinyl floorings to kitchen & hallways

BATHROOM

- Contemporary white bathroom suite with chrome fittings
- Neutral ceramic tiles for easy cleaning
- Light wood effect vinyl flooring
- Shower over bath with glass screen
- Pedestal washbasin
- Chrome towel rail

INTERIOR & DECORATION

- White emulsion to walls and ceilings and white satin to woodwork
- Durable grey carpets to all bedrooms and living area
- High efficiency combi boiler
- Programmable room thermostat control
- TV / broadband connection points
- Built in storage solutions

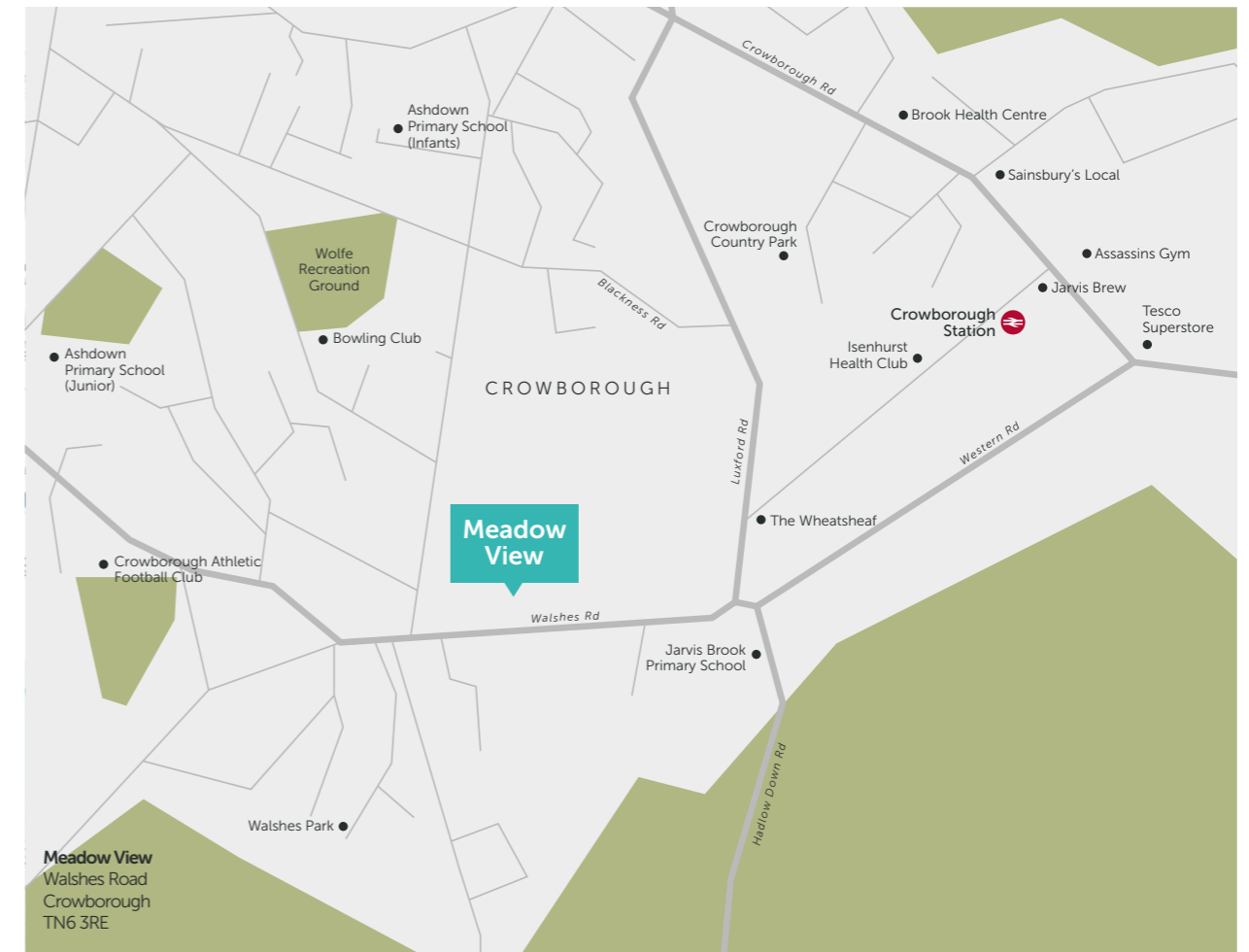
EXTERIOR

- Allocated parking
- Private gardens
- Car charging points on all houses
- Solar Panels on all homes
- Growing community in a popular area

WARRANTY

- All Love Living Homes are backed by a full 10-year NHBC warranty to provide peace of mind, and help you relax knowing that there's help if you need it!

Location and local amenities



Reserving your chosen plot

There's nothing more exciting than taking that first step onto the home ownership ladder, and at Love Living Homes, we aim to make that journey as straightforward and enjoyable as possible.

To register your interest or to find out more information, please email us at

buy@lovelivinghomes.co.uk



love livinghomes

Love Living Homes is the trading name of

