

Pearmain Place

Crowborough

lovelivinghomes

by

lovelivinghomes



Artistic impression. Elevation treatments are subject to change.

Pearmain Place is a collection of 2 and 3-bed Shared Ownership properties, located on the fringes of Crowborough's green countryside.

Pearmain Place site plan



- Love Living Homes 2 Bed House
- Love Living Homes 2 Bed Houses
- Love Living Homes 3 Bed Houses

Pearmain Place
Walshes Rd
Crowborough
TN6 3RA

This site plan depicts the intended layout and development mix at the time of creation and is for orientation purposes and may be subject to change. Parking, landscaping, finished locations and materials are all for guidance only.

Plot 67

2 Bed House



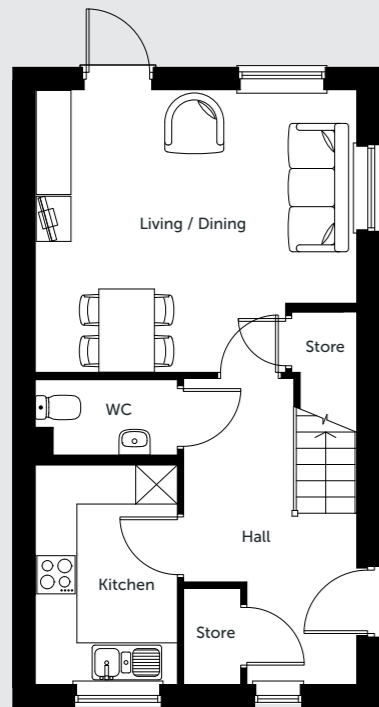
79.3 sqm / 853 sqft



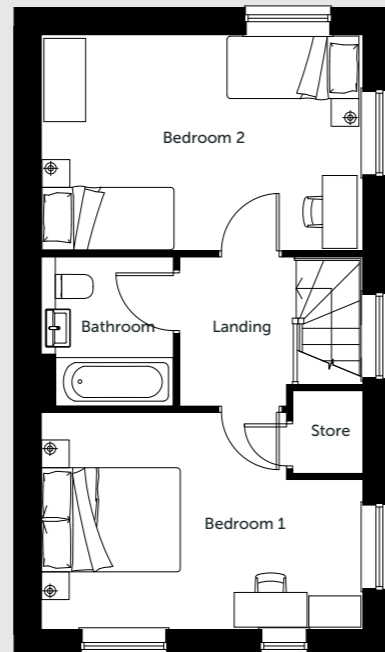
2 Bedrooms



1 Bathroom



Ground Floor



First Floor

DIMENSIONS

LIVING / DINING

4678mm x 4108mm - 15'4" x 13'6"

KITCHEN

3197mm x 2082mm - 10'6" x 6'10"

BEDROOM 1

4678mm x 3165mm - 15'4" x 10'4"

BEDROOM 2

4664mm x 3149mm - 15'3" x 10'4"

Please note that all dimensions shown are for guidance only and maximum measurements are shown where necessary. Plans should not be used for furniture or other fittings. Furniture shown is for illustrative purposes only and not included. Individual units may vary according to location – please consult your sales advisor for more details.

Plot 68 & 69

2 Bed House



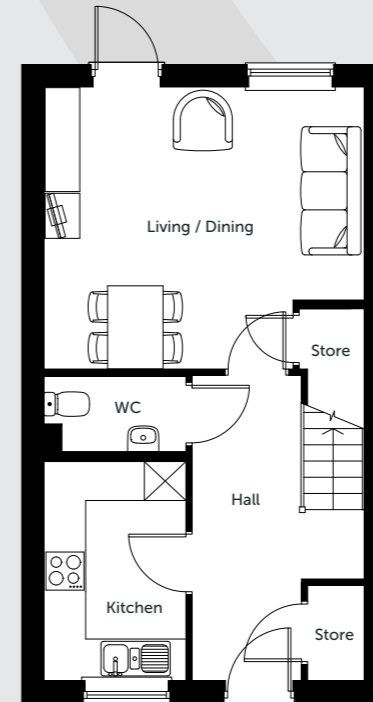
79.3 sqm / 853 sqft



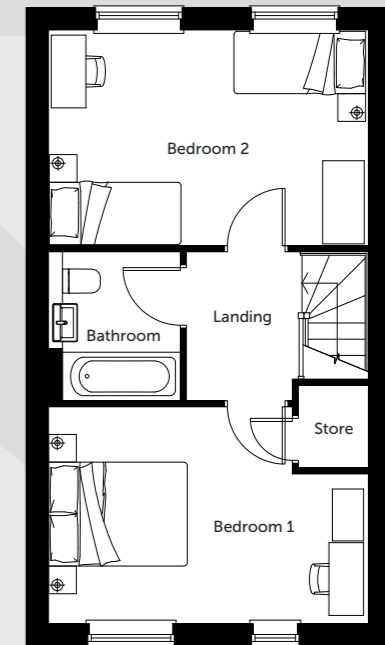
2 Bedrooms



1 Bathroom



Ground Floor



First Floor

DIMENSIONS

LIVING / DINING

4664mm x 4108mm - 15'3" x 13'6"

KITCHEN

3197mm x 2082mm - 10'6" x 6'10"

BEDROOM 1

4664mm x 3165mm - 15'3" x 10'4"

BEDROOM 2

4664mm x 3149mm - 15'3" x 10'4"

Please note that all dimensions shown are for guidance only and maximum measurements are shown where necessary. Plans should not be used for furniture or other fittings. Furniture shown is for illustrative purposes only and not included. Individual units may vary according to location – please consult your sales advisor for more details.

Plot 4, 5, 10 & 11

3 Bed House



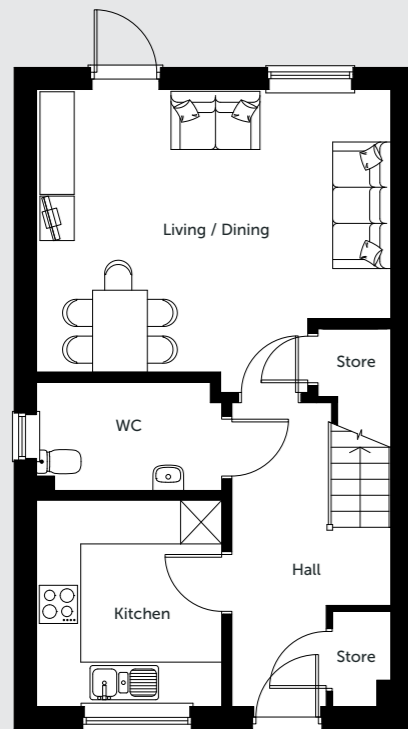
93.3 sqm / 1004 sqft



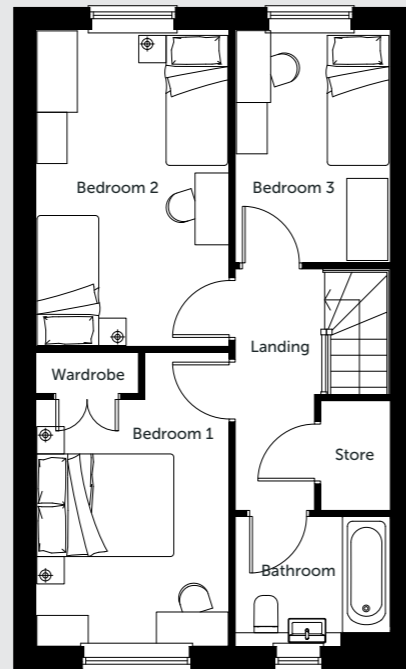
3 Bedrooms



1 Bathroom



Ground Floor



First Floor



DIMENSIONS

LIVING / DINING

5226mm x 4177mm - 17'2" x 13'8"

KITCHEN

3050mm x 2756mm - 10' x 9'

BEDROOM 1

4335mm x 2861mm - 14'3" x 9'4"

BEDROOM 2

4667mm x 2861mm - 15'4" x 9'4"

BEDROOM 3

3446mm x 2302mm - 11'4" x 7'6"



Please note that all dimensions shown are for guidance only and maximum measurements are shown where necessary. Plans should not be used for furniture or other fittings. Furniture shown is for illustrative purposes only and not included. Individual units may vary according to location – please consult your sales advisor for more details.

Computer generated images

Specification

All our homes at Pearmain Place include generous specifications to make life as comfortable and convenient as can be.

KITCHEN

- Contemporary Woodbury Anthracite (Dark grey) kitchen units with Tectonica (light grey) worktop
- Glass splash back
- Stainless steel integrated single oven
- 4 ring ceramic hob
- Integrated fridge/freezer, washer/dryer and dishwasher (not available for 2-bed homes)
- Glass cooker hood

BATHROOM

- Contemporary off white bathroom suite with
- Easy clean bathroom
- Novilon Anthracite Silver vinyl flooring
- Shower over bath with glass screen
- Stylish washbasin with mixer tap
- Towel rail

INTERIOR & DECORATION

- Textured, grey wood effect floorings to kitchen & hallways
- Neutral walls ready for your design and creativity
- Durable grey carpets to all bedrooms and living area
- TV / broadband connection points
- Built in storage solutions

EXTERIOR

- Allocated parking
- Private gardens
- Solar Pannels for energy efficiency
- Development in an area of historic royalty and outstanding natural beauty.

WARRANTY

- All Love Living Homes are backed by a Premier Guarantee warranty to provide peace of mind, and help you relax knowing that there's help if you need it!

Location and local amenities



Reserving your chosen plot

There's nothing more exciting than taking that first step onto the home ownership ladder, and at Love Living Homes, we aim to make that journey as straightforward and enjoyable as possible.

To register your interest or to find out more information, please email us at

buy@lovelivinghomes.co.uk



love livinghomes

Love Living Homes is the trading name of

